

Vales Point Power Station Monthly Environmental Data Summary

LICENCE NO	761	http://www.epa.nsw.gov.au/prpoeoapp/
LICENCE HOLDER	SUNSET POWER INTERNATIONAL PTY LTD	
REPORTING PERIOD	August 2025	
ADDRESS	VALES ROAD, MANNERING PARK NSW	

Compliance Summary

Were all licence monitoring limits met this month?

No

Details of any licence monitoring limit not complied with this month if applicable:

EPL Point	Air/Water/Noise/Other	Pollutant	Value Measured	Licence Limit	Comments
EPA 23	Water	TSS	63 mg/L	50 mg/L	Non-compliances occurred following significant rainfall in late July and early August. The EPA has been notified in accordance with condition R4.1 of the Vales Point Power Station Environment Protection Licence.
EPA 25	Water	TSS	Max value 180 mg/L	50 mg/L	
EPA 25	Water	pH	Max value pH 9.4	6.5 - 9	

Monitoring Locations

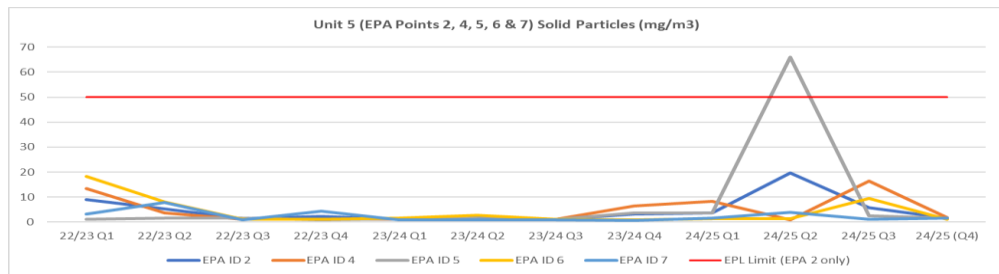
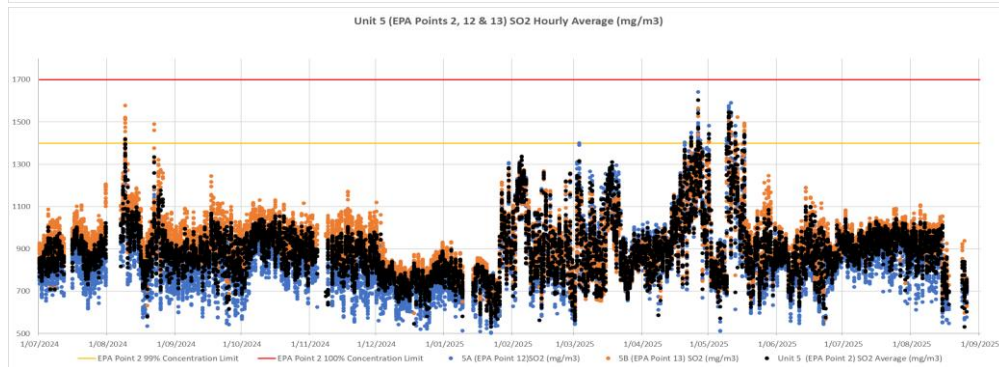
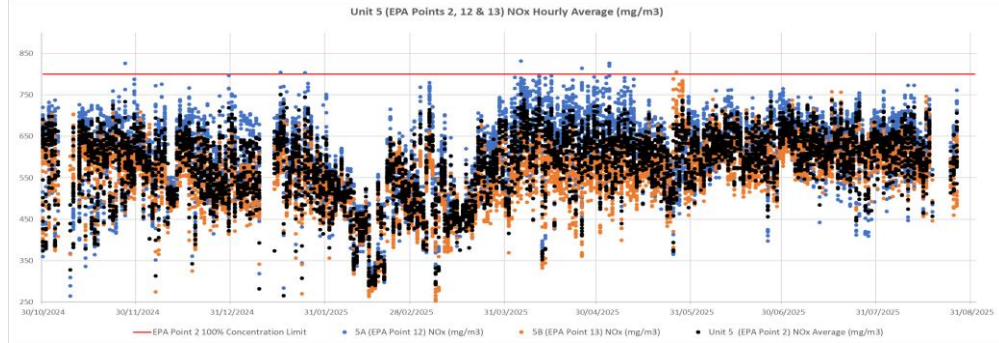
The location of Environment Protection Licence monitoring points within the Vales Point Power Station premises can be found at <https://www.de.com.au/environment/environmental-licences-and-monitoring>. Click the heading "Vales Point Licence Points" to open the pdf document.

Comments



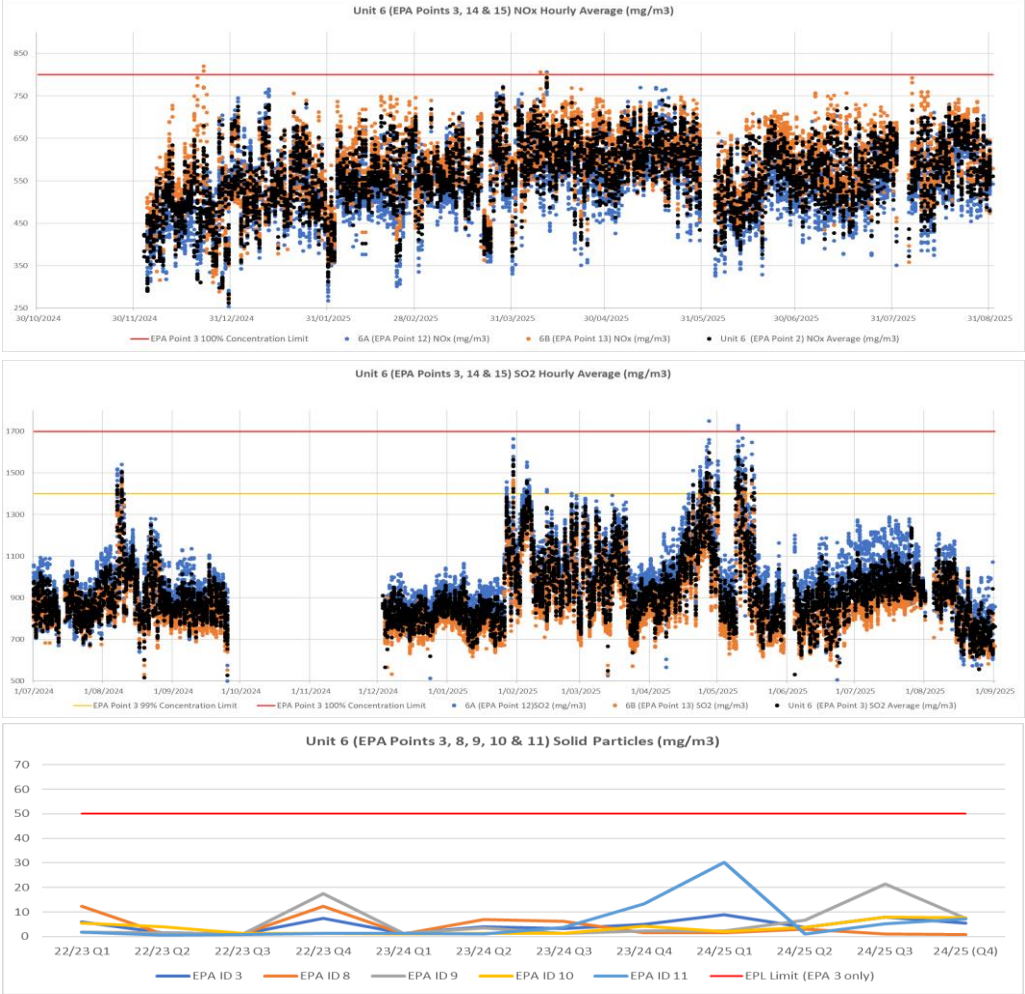
POINT 2 Combined air emissions from boiler 5 via Points 4 to 7 to Point 1 marked and shown as EPA ID 2 on The Plans ("VX837351-1 AND "VX837351-2" 03/06/2020 EPA REFERENCE DOC20/476695 AND DOC20/476695-1).												
Month	Pollutant	Unit of Measure	Sample/Measurement Frequency	Samples Collected & Analysed	Date Sampled	Lowest Sample Value	Mean of Samples	Highest Sample Value	99 Percentile Concentration Limit	100 Percentile Concentration Limit	Exceed 100% Limit (yes/no)	Comments
Aug-25	Cadmium	(mg/m3)	Every 6 months							0.03	No	
Aug-25	Chlorine	(mg/m3)	Every 6 months							4	No	
Aug-25	Fluorine	(mg/m3)	Every 6 months							30	No	
Aug-25	Hydrogen chloride	(mg/m3)	Every 6 months							50	No	
Aug-25	Mercury	(mg/m3)	Every 6 months							0.03	No	
Aug-25	Nitrogen Oxides	(mg/m3)	Continuous	97.8%	Aug-25	457	614	721		800	No	
Aug-25	Solid Particles	(mg/m3)	Quarterly							50	No	
Aug-25	Sulfur dioxide	(mg/m3)	Continuous	97.8%	Aug-25	532	866	1026	1400	1700	No	
Aug-25	Sulfuric acid mist and sulfur trioxide (as SO3)	(mg/m3)	Every 6 months							100	No	
Aug-25	Type 1 and Type 2 substances in aggregate	(mg/m3)	Every 6 months							0.6	No	
Aug-25	VOC's as n-propane equivalent	(mg/m3)	Every 6 months							8	No	

The 100% Concentration limits in the below graphs apply to EPA Point 2 only. EPA Point 2 is the combined emissions from EPA Points 12 & 13 for NOx and SO2 and EPA Points 4, 5, 6 & 7 for Particulates.



POINT 3 Combined air emissions from boiler 6 via Points 8 to 11 to Point 1 marked and shown as EPA ID 3 on The Plans ("VX837351-1 AND "VX837351-2" 03/06/2020 EPA REFERENCE DOC20/476695 AND DOC20/476695-1).												
Month	Pollutant	Unit of Measure	Sample/Measurement Frequency	Samples Collected & Analysed	Date Sampled	Lowest Sample Value	Mean of Samples	Highest Sample Value	99 Percentile Concentration Limit	100 Percentile Concentration Limit	Exceed 100% Limit (yes/no)	Comments
Aug-25	Cadmium	(mg/m3)	Every 6 months							0.03	No	
Aug-25	Chlorine	(mg/m3)	Every 6 months							4	No	
Aug-25	Fluorine	(mg/m3)	Every 6 months							30	No	
Aug-25	Hydrogen chloride	(mg/m3)	Every 6 months							50	No	
Aug-25	Mercury	(mg/m3)	Every 6 months							0.03	No	
Aug-25	Nitrogen Oxides	(mg/m3)	Continuous	97.1%	Aug-25	371	590	722		800	No	
Aug-25	Solid Particles	(mg/m3)	Quarterly							50	No	
Aug-25	Sulfur dioxide	(mg/m3)	Continuous	97.1%	Aug-25	558	837	1131	1400	1700	No	
Aug-25	Sulfuric acid mist and sulfur trioxide (as SO3)	(mg/m3)	Every 6 months							100	No	
Aug-25	Type 1 and Type 2 substances in aggregate	(mg/m3)	Every 6 months							0.6	No	
Aug-25	VOC's as n-propane equivalent	(mg/m3)	Every 6 months							8	No	

The 100% Concentration limits in the below graphs apply to EPA Point 3 only. EPA Point 3 is the combined Emissions from EPA Points 14 & 15 for NOx and SO2 and EPA Points 8, 9, 10 & 11 for Particulates.



POINT 4 Boiler number 5 exhaust - duct A marked and shown as EPA ID 4 on The Plans ("VX837351-1 AND "VX837351-2" 03/06/2020 EPA REFERENCE DOC20/476695 AND DOC20/476695-1).												
Month	Pollutant	Unit of Measure	Sample/Measurement Frequency	Samples Collected & Analysed	Date Sampled	Lowest Sample Value	Mean of Samples	Highest Sample Value	99 Percentile Concentration Limit	100 Percentile Concentration Limit	Exceedance (yes/no)	Comments
Aug-25	Cadmium	(mg/m3)	Every 6 months								N/A	
Aug-25	Carbon dioxide	(%)	Every 6 months								N/A	
Aug-25	Chlorine	(mg/m3)	Every 6 months								N/A	
Aug-25	Fluorine	(mg/m3)	Every 6 months								N/A	
Aug-25	Hydrogen chloride	(mg/m3)	Every 6 months								N/A	
Aug-25	Mercury	(mg/m3)	Every 6 months								N/A	
Aug-25	Solid Particles	(mg/m3)	Quarterly								N/A	
Aug-25	Sulfuric acid mist and sulfur trioxide (as SO3)	(mg/m3)	Every 6 months								N/A	
Aug-25	Type 1 and Type 2 substances in aggregate	(mg/m3)	Every 6 months								N/A	
Aug-25	VOC's as n-propane equivalent	(mg/m3)	Every 6 months								N/A	

POINT 5 Boiler number 5 exhaust - duct B marked and shown as EPA ID 5 on The Plans ("VX837351-1 AND "VX837351-2" 03/06/2020 EPA REFERENCE DOC20/476695 AND DOC20/476695-1).												
Month	Pollutant	Unit of Measure	Sample/Measurement Frequency	Samples Collected & Analysed	Date Sampled	Lowest Sample Value	Mean of Samples	Highest Sample Value	99 Percentile Concentration Limit	100 Percentile Concentration Limit	Exceedance (yes/no)	Comments
Aug-25	Cadmium	(mg/m3)	Every 6 months								N/A	
Aug-25	Mercury	(mg/m3)	Every 6 months								N/A	
Aug-25	Solid Particles	(mg/m3)	Quarterly								N/A	
Aug-25	Type 1 and Type 2 substances in aggregate	(mg/m3)	Every 6 months								N/A	

POINT 6 Boiler number 5 exhaust - duct C marked and shown as EPA ID 6 on The Plans ("VX837351-1 AND "VX837351-2" 03/06/2020 EPA REFERENCE DOC20/476695 AND DOC20/476695-1).												
Month	Pollutant	Unit of Measure	Sample/Measurement Frequency	Samples Collected & Analysed	Date Sampled	Lowest Sample Value	Mean of Samples	Highest Sample Value	99 Percentile Concentration Limit	100 Percentile Concentration Limit	Exceedance (yes/no)	Comments
Aug-25	Cadmium	(mg/m3)	Every 6 months								N/A	
Aug-25	Carbon dioxide	(%)	Every 6 months								N/A	
Aug-25	Chlorine	(mg/m3)	Every 6 months								N/A	
Aug-25	Fluorine	(mg/m3)	Every 6 months								N/A	
Aug-25	Hydrogen chloride	(mg/m3)	Every 6 months								N/A	
Aug-25	Mercury	(mg/m3)	Every 6 months								N/A	
Aug-25	Solid Particles	(mg/m3)	Quarterly								N/A	
Aug-25	Sulfuric acid mist and sulfur trioxide (as SO3)	(mg/m3)	Every 6 months								N/A	
Aug-25	Type 1 and Type 2 substances in aggregate	(mg/m3)	Every 6 months								N/A	
Aug-25	VOC's as n-propane equivalent	(mg/m3)	Every 6 months								N/A	

POINT 7 Boiler number 5 exhaust - duct D marked and shown as EPA ID 7 on The Plans ("VX837351-1 AND "VX837351-2" 03/06/2020 EPA REFERENCE DOC20/476695 AND DOC20/476695-1).												
Month	Pollutant	Unit of Measure	Sample/Measurement Frequency	Samples Collected & Analysed	Date Sampled	Lowest Sample Value	Mean of Samples	Highest Sample Value	99 Percentile Concentration Limit	100 Percentile Concentration Limit	Exceedance (yes/no)	Comments
Aug-25	Cadmium	(mg/m3)	Every 6 months								N/A	
Aug-25	Mercury	(mg/m3)	Every 6 months								N/A	
Aug-25	Solid Particles	(mg/m3)	Quarterly								N/A	
Aug-25	Type 1 and Type 2 substances in aggregate	(mg/m3)	Every 6 months								N/A	

POINT 8 Boiler number 6 exhaust - duct A marked and shown as EPA ID 8 on The Plans ("VX837351-1 AND "VX837351-2" 03/06/2020 EPA REFERENCE DOC20/476695 AND DOC20/476695-1).												
Month	Pollutant	Unit of Measure	Sample/Measurement Frequency	Samples Collected & Analysed	Date Sampled	Lowest Sample Value	Mean of Samples	Highest Sample Value	99 Percentile Concentration Limit	100 Percentile Concentration Limit	Exceedance (yes/no)	Comments
Aug-25	Cadmium	(mg/m3)	Every 6 months								N/A	
Aug-25	Carbon dioxide	(%)	Every 6 months								N/A	
Aug-25	Chlorine	(mg/m3)	Every 6 months								N/A	
Aug-25	Fluorine	(mg/m3)	Every 6 months								N/A	
Aug-25	Hydrogen chloride	(mg/m3)	Every 6 months								N/A	
Aug-25	Mercury	(mg/m3)	Every 6 months								N/A	
Aug-25	Solid Particles	(mg/m3)	Quarterly								N/A	
Aug-25	Sulfuric acid mist and sulfur trioxide (as SO3)	(mg/m3)	Every 6 months								N/A	
Aug-25	Type 1 and Type 2 substances in aggregate	(mg/m3)	Every 6 months								N/A	
Aug-25	VOC's as n-propane equivalent	(mg/m3)	Every 6 months								N/A	

POINT 9 Boiler number 6 exhaust - duct B marked and shown as EPA ID 9 on The Plans ("VX837351-1 AND "VX837351-2" 03/06/2020 EPA REFERENCE DOC20/476695 AND DOC20/476695-1).												
Month	Pollutant	Unit of Measure	Sample/Measurement Frequency	Samples Collected & Analysed	Date Sampled	Lowest Sample Value	Mean of Samples	Highest Sample Value	99 Percentile Concentration Limit	100 Percentile Concentration Limit	Exceedance (yes/no)	Comments
Aug-25	Cadmium	(mg/m3)	Every 6 months								N/A	
Aug-25	Mercury	(mg/m3)	Every 6 months								N/A	
Aug-25	Solid Particles	(mg/m3)	Quarterly								N/A	
Aug-25	Type 1 and Type 2 substances in aggregate	(mg/m3)	Every 6 months								N/A	

POINT 10 Boiler number 6 exhaust - duct C marked and shown as EPA ID 10 on The Plans ("VX837351-1 AND "VX837351-2" 03/06/2020 EPA REFERENCE DOC20/476695 AND DOC20/476695-1).												
Month	Pollutant	Unit of Measure	Sample/Measurement Frequency	Samples Collected & Analysed	Date Sampled	Lowest Sample Value	Mean of Samples	Highest Sample Value	99 Percentile Concentration Limit	100 Percentile Concentration Limit	Exceedance (yes/no)	Comments
Aug-25	Cadmium	(mg/m3)	Every 6 months								N/A	
Aug-25	Carbon dioxide	(%)	Every 6 months								N/A	
Aug-25	Chlorine	(mg/m3)	Every 6 months								N/A	
Aug-25	Fluorine	(mg/m3)	Every 6 months								N/A	
Aug-25	Hydrogen chloride	(mg/m3)	Every 6 months								N/A	
Aug-25	Mercury	(mg/m3)	Every 6 months								N/A	
Aug-25	Solid Particles	(mg/m3)	Quarterly								N/A	
Aug-25	Sulfuric acid mist and sulfur trioxide (as SO3)	(mg/m3)	Every 6 months								N/A	
Aug-25	Type 1 and Type 2 substances in aggregate	(mg/m3)	Every 6 months								N/A	
Aug-25	VOC's as n-propane equivalent	(mg/m3)	Every 6 months								N/A	
POINT 11 Boiler number 6 exhaust - duct D marked and shown as EPA ID 11 on The Plans ("VX837351-1 AND "VX837351-2" 03/06/2020 EPA REFERENCE DOC20/476695 AND DOC20/476695-1).												
Month	Pollutant	Unit of Measure	Sample/Measurement Frequency	Samples Collected & Analysed	Date Sampled	Lowest Sample Value	Mean of Samples	Highest Sample Value	99 Percentile Concentration Limit	100 Percentile Concentration Limit	Exceedance (yes/no)	Comments
Aug-25	Cadmium	(mg/m3)	Every 6 months								N/A	
Aug-25	Mercury	(mg/m3)	Every 6 months								N/A	
Aug-25	Solid Particles	(mg/m3)	Quarterly								N/A	
Aug-25	Type 1 and Type 2 substances in aggregate	(mg/m3)	Every 6 months								N/A	
POINT 12 Boiler number 5 combined exhaust - duct A and B (points 4 and 5) marked and shown as EPA ID 12 on The Plans ("VX837351-1 AND "VX837351-2" 03/06/2020 EPA REFERENCE DOC20/476695 AND DOC20/476695-1).												
Month	Pollutant	Unit of Measure	Sample/Measurement Frequency	Samples Collected & Analysed	Date Sampled	Lowest Sample Value	Mean of Samples	Highest Sample Value	99 Percentile Concentration Limit	100 Percentile Concentration Limit	Exceedance (yes/no)	Comments
Aug-25	Nitrogen Oxides	(mg/m3)	Continuous	97.9%	Aug-25	447	639	773			N/A	
Aug-25	Sulfur dioxide	(mg/m3)	Continuous	97.9%	Aug-25	433	815	985			N/A	
POINT 13 Boiler number 5 combined exhaust - duct C and D (points 6 and 7) marked and shown as EPA ID 13 on The Plans ("VX837351-1 AND "VX837351-2" 03/06/2020 EPA REFERENCE DOC20/476695 AND DOC20/476695-1).												
Month	Pollutant	Unit of Measure	Sample/Measurement Frequency	Samples Collected & Analysed	Date Sampled	Lowest Sample Value	Mean of Samples	Highest Sample Value	99 Percentile Concentration Limit	100 Percentile Concentration Limit	Exceedance (yes/no)	Comments
Aug-25	Nitrogen Oxides	(mg/m3)	Continuous	97.6%	Aug-25	446	588	746			N/A	
Aug-25	Sulfur dioxide	(mg/m3)	Continuous	97.6%	Aug-25	497	917	1108			N/A	
POINT 14 Boiler number 6 combined exhaust - duct A and B (points 8 and 9) marked and shown as EPA ID 14 on The Plans ("VX837351-1 AND "VX837351-2" 03/06/2020 EPA REFERENCE DOC20/476695 AND DOC20/476695-1).												
Month	Pollutant	Unit of Measure	Sample/Measurement Frequency	Samples Collected & Analysed	Date Sampled	Lowest Sample Value	Mean of Samples	Highest Sample Value	99 Percentile Concentration Limit	100 Percentile Concentration Limit	Exceedance (yes/no)	Comments
Aug-25	Nitrogen Oxides	(mg/m3)	Continuous	97.1%	Aug-25	374	564	730			N/A	
Aug-25	Sulfur dioxide	(mg/m3)	Continuous	97.1%	Aug-25	574	874	1208			N/A	
POINT 15 Boiler number 6 combined exhaust - duct C and D (points 10 and 11) marked and shown as EPA ID 12 on The Plans ("VX837351-1 AND "VX837351-2" 03/06/2020 EPA REFERENCE DOC20/476695 AND DOC20/476695-1).												
Month	Pollutant	Unit of Measure	Sample/Measurement Frequency	Samples Collected & Analysed	Date Sampled	Lowest Sample Value	Mean of Samples	Highest Sample Value	99 Percentile Concentration Limit	100 Percentile Concentration Limit	Exceedance (yes/no)	Comments
Aug-25	Nitrogen Oxides	(mg/m3)	Continuous	97.1%	Aug-25	358	616	793			N/A	
Aug-25	Sulfur dioxide	(mg/m3)	Continuous	97.1%	Aug-25	420	799	1054			N/A	

POINT 22 Discharge of cooling water from the cooling water outlet canal to Wyee Bay marked and shown as EPA ID 22 on The Plans ("VX837351-1 AND "VX837351-2" 03/06/2020 EPA REFERENCE DOC20/476695 AND DOC20/476695-1).												
Month	Pollutant	Unit of Measure	Sample/Measurement Frequency	Samples Collected & Analysed	Date Sampled	Lowest Sample Value	Mean of Samples	Highest Sample Value	98.5 Percentile Concentration Limit	100 Percentile Concentration Limit	Exceed 100% Limit (yes/no)	Comments
Aug-25	Chlorine (free residual)	(mg/L)	Monthly during discharge	1	4/08/2025	0	0	0		0.2	No	
Aug-25	Copper	(mg/L)	Monthly during discharge	1	4/08/2025	0.002	0.002	0.002		0.005	No	
Aug-25	Iron	(mg/L)	Monthly during discharge	1	4/08/2025	0.06	0.06	0.06		0.3	No	
Aug-25	Oil and Grease	Visible	Continuous during discharge	100%	Aug-25	NIL	NIL	NIL				
Aug-25	Selenium	(mg/L)	Monthly during discharge	1	4/08/2025	0.002	0.002	0.002		0.005	No	
Aug-25	Temperature	(°C)	Continuous during discharge	100%	Aug-25	17.3	22.5	28.1	35	37.5	No	

POINT 23 Discharge of supernatant water from the ash dam to the cooling water outlet canal to Wyee Bay marked and shown as EPA ID 23 on The Plans ("VX837351-1 AND "VX837351-2" 03/06/2020 EPA REFERENCE DOC20/476695 AND DOC20/476695-1).												
Month	Pollutant	Unit of Measure	Sample/Measurement Frequency	Samples Collected & Analysed	Date Sampled	Lowest Sample Value	Mean of Samples	Highest Sample Value	99 Percentile Concentration Limit	100 Percentile Concentration Limit	Exceedance (yes/no)	Comments
Aug-25	Aluminium	(mg/L)	Monthly during discharge	1	4/08/2025	0.74	0.74	0.74				
Aug-25	Ammonia	(mg/L)	Monthly during discharge	1	4/08/2025	0.200	0.200	0.200				
Aug-25	Arsenic (III)	(mg/L)	Monthly during discharge	1	4/08/2025	<0.001	<0.001	<0.001				
Aug-25	Arsenic (V)	(mg/L)	Monthly during discharge	1	4/08/2025	0.008	0.008	0.008				
Aug-25	Cadmium	(mg/L)	Monthly during discharge	1	4/08/2025	<0.0001	<0.0001	<0.0001				
Aug-25	Chromium (trivalent)	(mg/L)	Monthly during discharge	1	4/08/2025	<0.005	<0.005	<0.005				
Aug-25	Chromium (VI) Compounds	(mg/L)	Monthly during discharge	1	4/08/2025	0.03	0.03	0.03				
Aug-25	Copper	(mg/L)	Monthly during discharge	1	4/08/2025	0.003	0.003	0.003				
Aug-25	Iron	(mg/L)	Monthly during discharge	1	4/08/2025	1.20	1.20	1.20				
Aug-25	Lead	(mg/L)	Monthly during discharge	1	4/08/2025	0.001	0.001	0.001				
Aug-25	Manganese	(mg/L)	Monthly during discharge	1	4/08/2025	0.059	0.059	0.059				
Aug-25	Nickel	(mg/L)	Monthly during discharge	1	4/08/2025	0.004	0.004	0.004				
Aug-25	Nitrate + nitrite (oxidised nitrogen)	(mg/L)	Monthly during discharge	1	4/08/2025	0.24	0.24	0.24				
Aug-25	Nitrogen	(mg/L)	Monthly during discharge	1	4/08/2025	1.1	1.1	1.1				
Aug-25	pH	pH	Monthly during discharge	1	4/08/2025	9.14	9.14	9.14		6.5 - 9.5	No	
Aug-25	Phosphorus	(mg/L)	Monthly during discharge	1	4/08/2025	0.20	0.20	0.20				
Aug-25	Reactive Phosphorus	(mg/L)	Monthly during discharge	1	4/08/2025	0.07	0.07	0.07				
Aug-25	Selenium	(mg/L)	Monthly during discharge	1	4/08/2025	0.056	0.056	0.056				
Aug-25	Total Kjeldahl Nitrogen	(mg/L)	Monthly during discharge	1	4/08/2025	0.8	0.8	0.8				
Aug-25	Total Suspended Solids	(mg/L)	Monthly during discharge	1	4/08/2025	63	63	63		50	Yes	
Aug-25	Vanadium	(mg/L)	Monthly during discharge	1	4/08/2025	0.120	0.120	0.120				
Aug-25	Zinc	(mg/L)	Monthly during discharge	1	4/08/2025	0.025	0.025	0.025				

POINT 24 Discharge of seepage water from the ash dam rehabilitation area to Mannering Bay marked and shown as EPA ID 24 on The Plans ("VX837351-1 AND "VX837351-2" 03/06/2020 EPA REFERENCE DOC20/476695 AND DOC20/476695-1).												
Month	Pollutant	Unit of Measure	Sample/Measurement Frequency	Samples Collected & Analysed	Date Sampled	Lowest Sample Value	Mean of Samples	Highest Sample Value	Discharge (yes/no)	100 Percentile Concentration Limit	Exceedance (yes/no)	Comments
Aug-25	Aluminium	(mg/L)	Monthly during discharge	1	4/08/2025	0.36	0.36	0.36	Yes			
Aug-25	Ammonia	(mg/L)	Monthly during discharge	1	4/08/2025	0.99	0.99	0.99	Yes			
Aug-25	Arsenic (III)	(mg/L)	Monthly during discharge	1	4/08/2025	<0.001	<0.001	<0.001	Yes			
Aug-25	Arsenic (V)	(mg/L)	Monthly during discharge	1	4/08/2025	<0.001	<0.001	<0.001	Yes			
Aug-25	Cadmium	(mg/L)	Monthly during discharge	1	4/08/2025	<0.0001	<0.0001	<0.0001	Yes			
Aug-25	Chromium (trivalent)	(mg/L)	Monthly during discharge	1	4/08/2025	<0.005	<0.005	<0.005	Yes			
Aug-25	Chromium (VI) Compounds	(mg/L)	Monthly during discharge	1	4/08/2025	<0.005	<0.005	<0.005	Yes			
Aug-25	Copper	(mg/L)	Monthly during discharge	1	4/08/2025	0.001	0.001	0.001	Yes			
Aug-25	Iron	(mg/L)	Monthly during discharge	1	4/08/2025	0.92	0.92	0.92	Yes			
Aug-25	Lead	(mg/L)	Monthly during discharge	1	4/08/2025	<0.001	<0.001	<0.001	Yes			
Aug-25	Manganese	(mg/L)	Monthly during discharge	1	4/08/2025	0.097	0.097	0.097	Yes			
Aug-25	Nickel	(mg/L)	Monthly during discharge	1	4/08/2025	<0.001	<0.001	<0.001	Yes			
Aug-25	Nitrate + nitrite (oxidised nitrogen)	(mg/L)	Monthly during discharge	1	4/08/2025	0.15	0.15	0.15	Yes			
Aug-25	Nitrogen	(mg/L)	Monthly during discharge	1	4/08/2025	1.00	1.00	1.00	Yes			
Aug-25	pH	pH	Monthly during discharge	1	4/08/2025	7.87	7.87	7.87	Yes	6.5 - 9.5	No	
Aug-25	Phosphorus	(mg/L)	Monthly during discharge	1	4/08/2025	<0.05	<0.05	<0.05	Yes			
Aug-25	Reactive Phosphorus	(mg/L)	Monthly during discharge	1	4/08/2025	<0.005	<0.005	<0.005	Yes			
Aug-25	Selenium	(mg/L)	Monthly during discharge	1	4/08/2025	0.002	0.002	0.002	Yes			
Aug-25	Total Kjeldahl Nitrogen	(mg/L)	Monthly during discharge	1	4/08/2025	0.90	0.90	0.90	Yes			
Aug-25	Total Suspended Solids	(mg/L)	Monthly during discharge	1	4/08/2025	14	14	14	Yes	50	No	
Aug-25	Vanadium	(mg/L)	Monthly during discharge	1	4/08/2025	0.01	0.01	0.01	Yes			
Aug-25	Zinc	(mg/L)	Monthly during discharge	1	4/08/2025	0.014	0.014	0.014	Yes			
POINT 25 Discharge of over boarded water from the ash dam to Mannering Bay marked and shown as EPA ID 25 on The Plans ("VX837351-1 AND "VX837351-2" 03/06/2020 EPA REFERENCE DOC20/476695 AND DOC20/476695-1).												
Month	Pollutant	Unit of Measure	Sample/Measurement Frequency	Samples Collected & Analysed	Date Sampled	Lowest Sample Value	Mean of Samples	Highest Sample Value	Discharge (yes/no)	100 Percentile Concentration Limit	Exceedance (yes/no)	Comments
Aug-25	Aluminium	(mg/L)	Daily for any discharge >2 hrs	29	3/8 - 31/8	0.1	0.5	1.9	Yes			
Aug-25	Ammonia	(mg/L)	Daily for any discharge >2 hrs	29	3/8 - 31/8	<0.005	0.1	0.38	Yes			
Aug-25	Arsenic (III)	(mg/L)	Daily for any discharge >2 hrs	29	3/8 - 31/8	<0.001	0.00003	0.001	Yes			
Aug-25	Arsenic (V)	(mg/L)	Daily for any discharge >2 hrs	29	3/8 - 31/8	0.003	0.007	0.01	Yes			
Aug-25	Cadmium	(mg/L)	Daily for any discharge >2 hrs	29	3/8 - 31/8	<0.0001	<0.0001	<0.0001	Yes			
Aug-25	Chromium (trivalent)	(mg/L)	Daily for any discharge >2 hrs	29	3/8 - 31/8	<0.005	0.0063	0.02	Yes			
Aug-25	Chromium (VI) Compounds	(mg/L)	Daily for any discharge >2 hrs	29	3/8 - 31/8	<0.005	0.02	0.04	Yes			
Aug-25	Copper	(mg/L)	Daily for any discharge >2 hrs	29	3/8 - 31/8	<0.001	0.0016	0.009	Yes			
Aug-25	Iron	(mg/L)	Daily for any discharge >2 hrs	29	3/8 - 31/8	0.09	0.44	1.90	Yes			
Aug-25	Lead	(mg/L)	Daily for any discharge >2 hrs	29	3/8 - 31/8	<0.001	0.0002	0.002	Yes			
Aug-25	Manganese	(mg/L)	Daily for any discharge >2 hrs	29	3/8 - 31/8	<0.005	0.017	0.068	Yes			
Aug-25	Nickel	(mg/L)	Daily for any discharge >2 hrs	29	3/8 - 31/8	<0.001	0.0009	0.008	Yes			
Aug-25	Nitrate + nitrite (oxidised nitrogen)	(mg/L)	Daily for any discharge >2 hrs	29	3/8 - 31/8	0.04	0.66	5.93	Yes			
Aug-25	Nitrogen	(mg/L)	Daily for any discharge >2 hrs	29	3/8 - 31/8	0.2	1.2	14	Yes			
Aug-25	pH	pH	Daily for any discharge >2 hrs	29	3/8 - 31/8	6.96	8.73	9.4	Yes	6.5 - 9	Yes	
Aug-25	Phosphorus	(mg/L)	Daily for any discharge >2 hrs	29	3/8 - 31/8	<0.05	0.07	0.2	Yes			
Aug-25	Reactive Phosphorus	(mg/L)	Daily for any discharge >2 hrs	29	3/8 - 31/8	<0.005	0.032	0.095	Yes			
Aug-25	Selenium	(mg/L)	Daily for any discharge >2 hrs	29	3/8 - 31/8	0.006	0.032	0.076	Yes			
Aug-25	Total Kjeldahl Nitrogen	(mg/L)	Daily for any discharge >2 hrs	29	3/8 - 31/8	<0.1	0.5	8	Yes			
Aug-25	Total Suspended Solids	(mg/L)	Daily for any discharge >2 hrs	29	3/8 - 31/8	<5	44	180	Yes	50	Yes	
Aug-25	Vanadium	(mg/L)	Daily for any discharge >2 hrs	29	3/8 - 31/8	0.009	0.06	0.12	Yes			
Aug-25	Zinc	(mg/L)	Daily for any discharge >2 hrs	29	3/8 - 31/8	0.002	0.014	0.1	Yes			

POINT 30 Groundwater quality monitoring bore marked and shown as EPA ID 30 on The Plans ("VX837351-1 AND "VX837351-2" 03/06/2020 EPA REFERENCE DOC20/476695 AND DOC20/476695-1).												
Month	Pollutant	Unit of Measure	Sample/Measurement Frequency	Samples Collected & Analysed	Date Sampled	Lowest Sample Value	Mean of Samples	Highest Sample Value	99 Percentile Concentration Limit	100 Percentile Concentration Limit	Exceedance (yes/no)	Comments
Aug-25	Aluminium	(mg/L)	Quarterly									
Aug-25	Ammonia	(mg/L)	Quarterly									
Aug-25	Arsenic (III)	(mg/L)	Quarterly									
Aug-25	Arsenic (V)	(mg/L)	Quarterly									
Aug-25	Cadmium	(mg/L)	Quarterly									
Aug-25	Chromium (trivalent)	(mg/L)	Quarterly									
Aug-25	Chromium (VI) Compounds	(mg/L)	Quarterly									
Aug-25	Copper	(mg/L)	Quarterly									
Aug-25	Electrical Conductivity	(us/cm)	Quarterly									
Aug-25	Iron	(mg/L)	Quarterly									
Aug-25	Lead	(mg/L)	Quarterly									Next round of quarterly groundwater sampling scheduled for October 2025
Aug-25	Magnesium	(mg/L)	Quarterly									
Aug-25	Manganese	(mg/L)	Quarterly									
Aug-25	Nickel	(mg/L)	Quarterly									
Aug-25	pH	pH	Quarterly									
Aug-25	Potassium	(mg/L)	Quarterly									
Aug-25	Selenium	(mg/L)	Quarterly									
Aug-25	Sodium	(mg/L)	Quarterly									
Aug-25	Standing Water Level	(m)	Quarterly									
Aug-25	Vanadium	(mg/L)	Quarterly									
Aug-25	Zinc	(mg/L)	Quarterly									

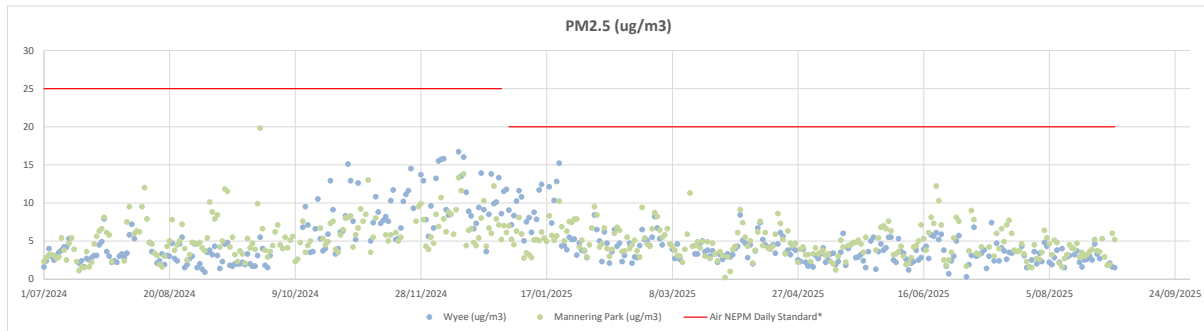
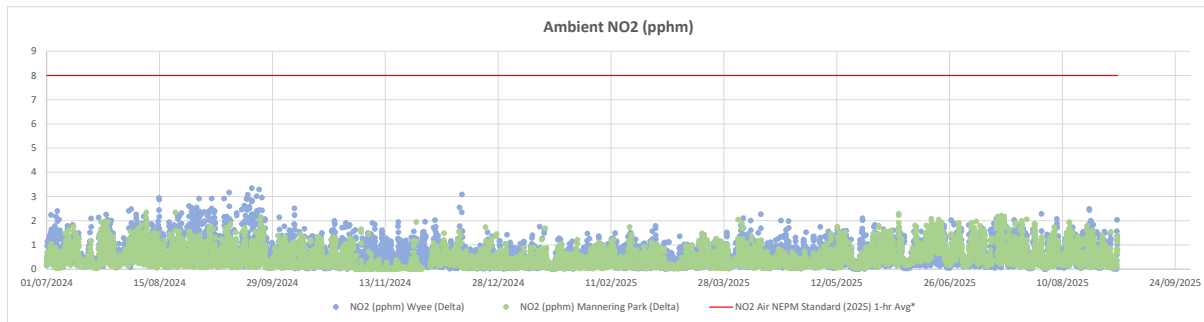
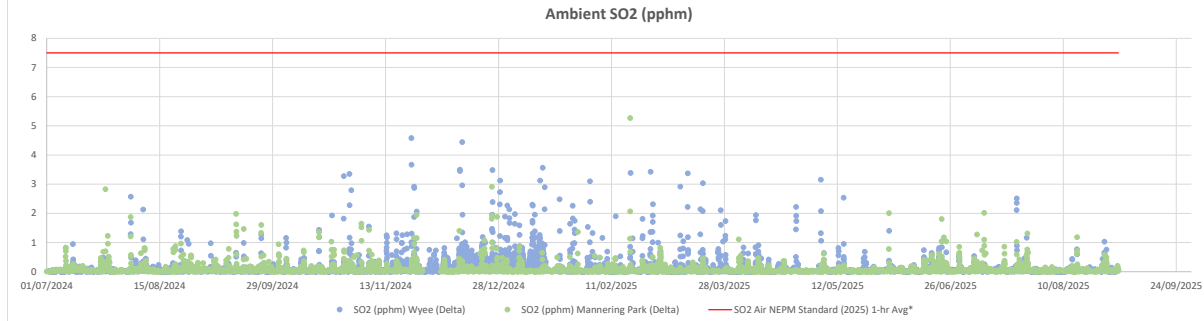
POINT 31 Groundwater quality monitoring bore marked and shown as EPA ID 31 on The Plans ("VX837351-1 AND "VX837351-2" 03/06/2020 EPA REFERENCE DOC20/476695 AND DOC20/476695-1).												
Month	Pollutant	Unit of Measure	Sample/Measurement Frequency	Samples Collected & Analysed	Date Sampled	Lowest Sample Value	Mean of Samples	Highest Sample Value	99 Percentile Concentration Limit	100 Percentile Concentration Limit	Exceedance (yes/no)	Comments
Aug-25	Aluminium	(mg/L)	Quarterly									
Aug-25	Ammonia	(mg/L)	Quarterly									
Aug-25	Arsenic (III)	(mg/L)	Quarterly									
Aug-25	Arsenic (V)	(mg/L)	Quarterly									
Aug-25	Cadmium	(mg/L)	Quarterly									
Aug-25	Chromium (trivalent)	(mg/L)	Quarterly									
Aug-25	Chromium (VI) Compounds	(mg/L)	Quarterly									
Aug-25	Copper	(mg/L)	Quarterly									
Aug-25	Electrical Conductivity	(us/cm)	Quarterly									
Aug-25	Iron	(mg/L)	Quarterly									
Aug-25	Lead	(mg/L)	Quarterly									Next round of quarterly groundwater sampling scheduled for October 2025
Aug-25	Magnesium	(mg/L)	Quarterly									
Aug-25	Manganese	(mg/L)	Quarterly									
Aug-25	Nickel	(mg/L)	Quarterly									
Aug-25	pH	pH	Quarterly									
Aug-25	Potassium	(mg/L)	Quarterly									
Aug-25	Selenium	(mg/L)	Quarterly									
Aug-25	Sodium	(mg/L)	Quarterly									
Aug-25	Standing Water Level	(m)	Quarterly									
Aug-25	Vanadium	(mg/L)	Quarterly									
Aug-25	Zinc	(mg/L)	Quarterly									

POINT 32 Groundwater quality monitoring bore marked and shown as EPA ID 32 on The Plans ("VX837351-1 AND "VX837351-2" 03/06/2020 EPA REFERENCE DOC20/476695 AND DOC20/476695-1).												
Month	Pollutant	Unit of Measure	Sample/Measurement Frequency	Samples Collected & Analysed	Date Sampled	Lowest Sample Value	Mean of Samples	Highest Sample Value	99 Percentile Concentration Limit	100 Percentile Concentration Limit	Exceedance (yes/no)	Comments
Aug-25	Aluminium	(mg/L)	Quarterly									
Aug-25	Ammonia	(mg/L)	Quarterly									
Aug-25	Arsenic (III)	(mg/L)	Quarterly									
Aug-25	Arsenic (V)	(mg/L)	Quarterly									
Aug-25	Cadmium	(mg/L)	Quarterly									
Aug-25	Chromium (trivalent)	(mg/L)	Quarterly									
Aug-25	Chromium (VI) Compounds	(mg/L)	Quarterly									
Aug-25	Copper	(mg/L)	Quarterly									
Aug-25	Electrical Conductivity	(us/cm)	Quarterly									
Aug-25	Iron	(mg/L)	Quarterly									
Aug-25	Lead	(mg/L)	Quarterly									
Aug-25	Magnesium	(mg/L)	Quarterly									Next round of quarterly groundwater sampling scheduled for October 2025
Aug-25	Manganese	(mg/L)	Quarterly									
Aug-25	Nickel	(mg/L)	Quarterly									
Aug-25	pH	pH	Quarterly									
Aug-25	Potassium	(mg/L)	Quarterly									
Aug-25	Selenium	(mg/L)	Quarterly									
Aug-25	Sodium	(mg/L)	Quarterly									
Aug-25	Standing Water Level	(m)	Quarterly									
Aug-25	Vanadium	(mg/L)	Quarterly									
Aug-25	Zinc	(mg/L)	Quarterly									
POINT 33 Groundwater quality monitoring bore marked and shown as EPA ID 33 on The Plans ("VX837351-1 AND "VX837351-2" 03/06/2020 EPA REFERENCE DOC20/476695 AND DOC20/476695-1).												
Month	Pollutant	Unit of Measure	Sample/Measurement Frequency	Samples Collected & Analysed	Date Sampled	Lowest Sample Value	Mean of Samples	Highest Sample Value	99 Percentile Concentration Limit	100 Percentile Concentration Limit	Exceedance (yes/no)	Comments
Aug-25	Aluminium	(mg/L)	Quarterly									
Aug-25	Ammonia	(mg/L)	Quarterly									
Aug-25	Arsenic (III)	(mg/L)	Quarterly									
Aug-25	Arsenic (V)	(mg/L)	Quarterly									
Aug-25	Cadmium	(mg/L)	Quarterly									
Aug-25	Chromium (trivalent)	(mg/L)	Quarterly									
Aug-25	Chromium (VI) Compounds	(mg/L)	Quarterly									
Aug-25	Copper	(mg/L)	Quarterly									
Aug-25	Electrical Conductivity	(us/cm)	Quarterly									
Aug-25	Iron	(mg/L)	Quarterly									
Aug-25	Lead	(mg/L)	Quarterly									
Aug-25	Magnesium	(mg/L)	Quarterly									Next round of quarterly groundwater sampling scheduled for October 2025
Aug-25	Manganese	(mg/L)	Quarterly									
Aug-25	Nickel	(mg/L)	Quarterly									
Aug-25	pH	pH	Quarterly									
Aug-25	Potassium	(mg/L)	Quarterly									
Aug-25	Selenium	(mg/L)	Quarterly									
Aug-25	Sodium	(mg/L)	Quarterly									
Aug-25	Standing Water Level	(m)	Quarterly									
Aug-25	Vanadium	(mg/L)	Quarterly									
Aug-25	Zinc	(mg/L)	Quarterly									

POINT 34 Groundwater quality monitoring bore marked and shown as EPA ID 33 on The Plans ("VX837351-1 AND "VX837351-2" 03/06/2020 EPA REFERENCE DOC20/476695 AND DOC20/476695-1).												
Month	Pollutant	Unit of Measure	Sample/M Measurement Frequency	Samples Collected & Analysed	Date Sampled	Lowest Sample Value	Mean of Samples	Highest Sample Value	99 Percentile Concentration Limit	100 Percentile Concentration Limit	Exceedance (yes/no)	Comments
Aug-25	Aluminium	(mg/L)	Quarterly									
Aug-25	Ammonia	(mg/L)	Quarterly									
Aug-25	Arsenic (III)	(mg/L)	Quarterly									
Aug-25	Arsenic (V)	(mg/L)	Quarterly									
Aug-25	Cadmium	(mg/L)	Quarterly									
Aug-25	Chromium (trivalent)	(mg/L)	Quarterly									
Aug-25	Chromium (VI) Compounds	(mg/L)	Quarterly									
Aug-25	Copper	(mg/L)	Quarterly									
Aug-25	Electrical Conductivity	(us/cm)	Quarterly									
Aug-25	Iron	(mg/L)	Quarterly									
Aug-25	Lead	(mg/L)	Quarterly									Next round of quarterly groundwater sampling scheduled for October 2025
Aug-25	Magnesium	(mg/L)	Quarterly									
Aug-25	Manganese	(mg/L)	Quarterly									
Aug-25	Nickel	(mg/L)	Quarterly									
Aug-25	pH	pH	Quarterly									
Aug-25	Potassium	(mg/L)	Quarterly									
Aug-25	Selenium	(mg/L)	Quarterly									
Aug-25	Sodium	(mg/L)	Quarterly									
Aug-25	Standing Water Level	(m)	Quarterly									
Aug-25	Vanadium	(mg/L)	Quarterly									
Aug-25	Zinc	(mg/L)	Quarterly									

Ambient Air Quality Graphs

POINTS 16 & 35 Meteorological and ambient air quality monitoring stations at Wyee & Mannering Park marked and shown as EPA ID 16 & EPA ID 35 respectively on The Plan.



GENERAL COMMENTS

*For more information about the Australian Governments National Environment Protection (Ambient Air Quality) Measure (Air NEPM) visit <<https://www.nepc.gov.au/nepms/ambient-air-quality>>.
 PM_{2.5} changed from 25ug/m³ to 20ug/m³ in 2025. This reduction is reflected in the PM_{2.5} graph above.

**The Air NEPM daily standard for